

# Vegetation Management

M a k i n g R a i l w a y s S a f e r  
VIA Rail Canada's Commitment to Track Safety  
and Fire Control Regulations



**Issue:** Downed branches/trees falling onto tracks



**Risks:** Damage to trains and equipment

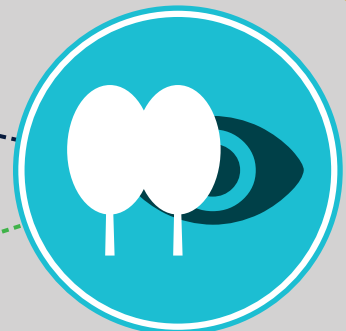


**Solutions:** Remove vegetation growing too close to the railway and plant trees a safe distance from tracks

**Risks:** Shortens braking distance for operators. Potential for collisions with vehicles that are hidden by vegetation



**Solutions:** Keep low vegetation in the railway corridor to maintain clear visibility of signals and road crossings



**Issue:** Tall vegetation obstructs sightlines

2

3



**Issue:** Tall trees and foliage interfering with power lines



**Risks:** Fires may result from sparks from damaged power lines



**Solutions:** Maintain clearance around power lines

**Risks:** Sparks from trains or lightning strikes can result in a fire along rail lines



**Solutions:** Controlled burns, herbicide application, or mechanical removal of vegetation



**Issue:** Dry vegetation and grass on and near railways

4

5



**Issue:** Overgrown vegetation in work areas



**Risks:** Increased hazard to work crews through exposure to wildlife and poisonous plants (poison ivy, etc), as well as the presence of natural hazards (such as tripping)



**Solutions:** Maintain a clear and safe work environment

**Risks:** Reduced drainage leads to softening of ground formation, causing track defects and increased maintenance



**Solutions:** Maintain clearance of ballast through herbicide application



**Issue:** Growth over track ballast reducing track drainage

6